

2026



# ALTARO

CONSTRUCTION & TURNKEY SOLUTIONS



[www.altaroinfra.com](http://www.altaroinfra.com)



# About Us.

## INTRODUCTION

Building with Purpose, **Altaro Infra is a design-led construction and turnkey solutions** firm committed to delivering thoughtfully crafted spaces that balance aesthetics, functionality, and long-term value.

We believe great spaces are not defined by appearance alone — they must perform beautifully, endure structurally, and elevate the way people live, work, and interact with their environment.

From private residences and premium apartments to hospitality developments, commercial spaces, and industrial facilities, Altaro Infra transforms concepts into reality through a seamless integration of design intelligence and execution excellence.

## **Who We Are**

**Altaro Infra was established with a clear purpose** — to redefine modern construction through a balanced approach of innovation, craftsmanship, and reliability.

We operate as a single-point partner, managing projects from concept to completion with transparency and precision.

With experience across residential, hospitality, and industrial developments, we deliver projects that enhance lifestyle value, operational efficiency, and long-term asset performance.

## **Our philosophy is simple ~**

Build with integrity. Design with purpose. Deliver with discipline.

We believe that every project tells a story, and we are committed to crafting narratives that resonate with communities and stakeholders alike.

Our team of dedicated professionals brings a wealth of expertise and a passion for excellence, ensuring that each endeavor not only meets but exceeds expectations.

At Altaro Infra, sustainability is at the heart of our operations. We are committed to implementing eco-friendly practices and utilizing cutting-edge technology to minimize our environmental footprint. This forward-thinking approach not only benefits the planet but also enhances the quality and longevity of the structures we create.

Our commitment to innovation is matched by our dedication to fostering strong relationships with our clients. We prioritize open communication, understanding that collaboration is key to achieving outstanding results. By listening to our clients' needs and aspirations, we tailor our solutions to align perfectly with their vision.

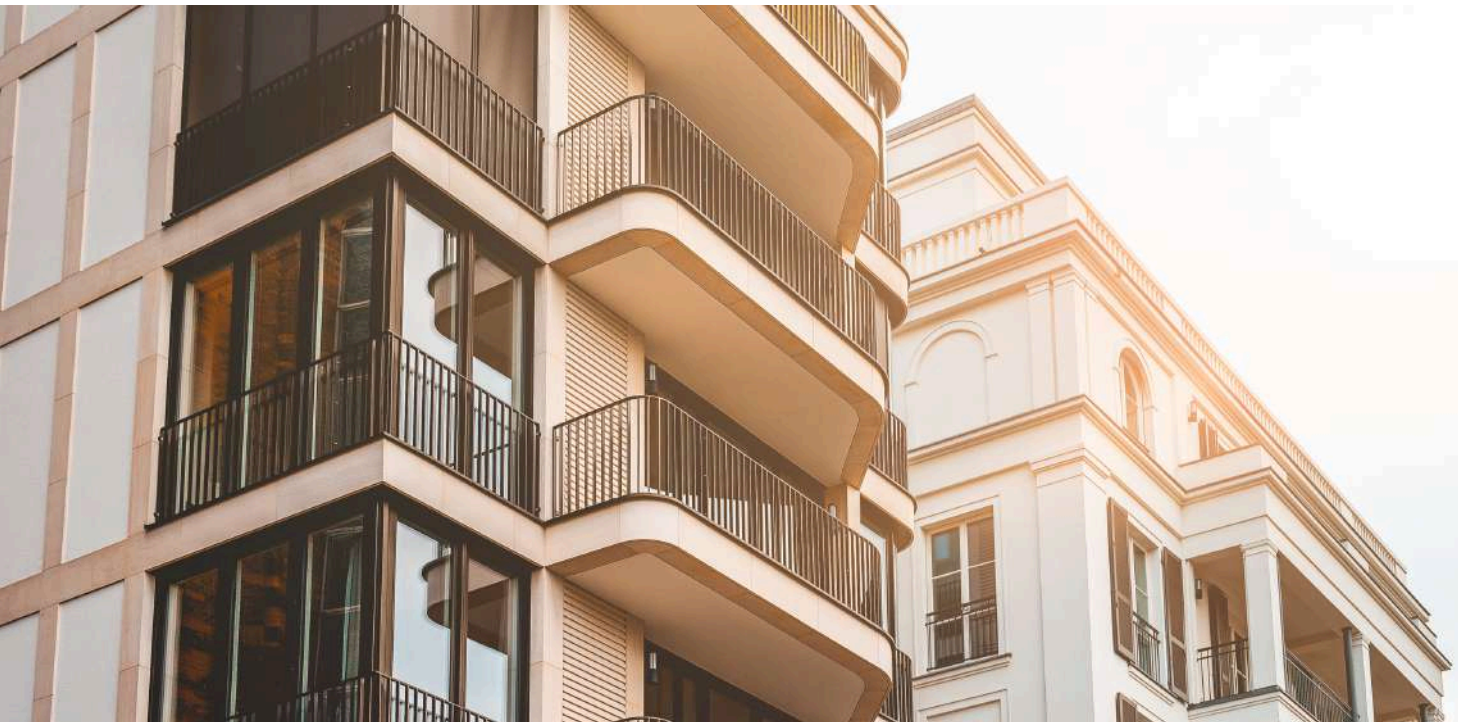
In every project, big or small, Altaro Infra strives to leave a lasting impact, shaping the future of construction with integrity and excellence.

# Our Philosophy & Approach

Altaro Infra is a multidisciplinary team of engineers, designers, and project managers dedicated to excellence in design and execution. Our philosophy emphasizes:

- **Thoughtful planning and clean design**
- **Structural integrity and performance**
- **Timeless aesthetics over trends**
- **Transparency, discipline, and trust**

We serve as a comprehensive design-and-build partner, focusing on sustainability and innovation to create inspiring environments. Our holistic approach ensures seamless integration of form and function, as we collaborate closely with clients to realize their visions. Equipped with the latest tools, we maintain high standards of quality and safety. Each project reflects our commitment to excellence, whether in commercial, residential, or public spaces, aiming to craft functional and beautiful environments.



# Visions & Values

## Our Vision :

To redefine modern living by combining innovation, creativity, and superior quality — creating spaces that inspire, perform beautifully, and embody true luxury.

## Our Mission :

- Deliver end-to-end turnkey solutions with uncompromising standards
- Integrate design excellence with construction precision
- Ensure transparency, discipline, and timely delivery
- Build enduring relationships through trust and performance

# How We Work

**Vision Alignment** – We begin by understanding the client's goals, functional requirements, lifestyle aspirations, and budget considerations. This phase ensures complete alignment between vision, feasibility, and execution strategy.

**Design & Planning** – Our design team translates ideas into intelligent, efficient, and aesthetically refined solutions. Detailed planning, drawings, and specifications are developed to ensure accuracy and clarity before execution begins.

**Engineering & Execution** – With disciplined project management and skilled on-ground teams, we execute each project with precision. Quality control, safety standards, and timelines are rigorously maintained.

**Delivery & Handover** – We deliver projects that are ready for use, thoroughly inspected, and finished to the highest standards — ensuring a smooth and stress-free handover experience.



# Our Services

- **CONSTRUCTION**

Robust, efficient, and high-quality construction solutions across residential, commercial, hospitality, and industrial sectors, with a strong focus on structural integrity and durability.

## **EXTERIOR ELEVATION & FAÇADE DESIGN**

Architectural façades that enhance identity, performance, and visual longevity — from contemporary minimalism to refined traditional styles.

**INTERIOR DESIGN** - Personalised interior solutions designed with balance, comfort, and sophistication, covering layout planning, lighting, materials, finishes, and detailing.

- **LUXURY LIFESTYLE SETUP**

Complete luxury environments including bespoke furniture, premium décor, smart home integrations, and high-end finishes that elevate everyday living.





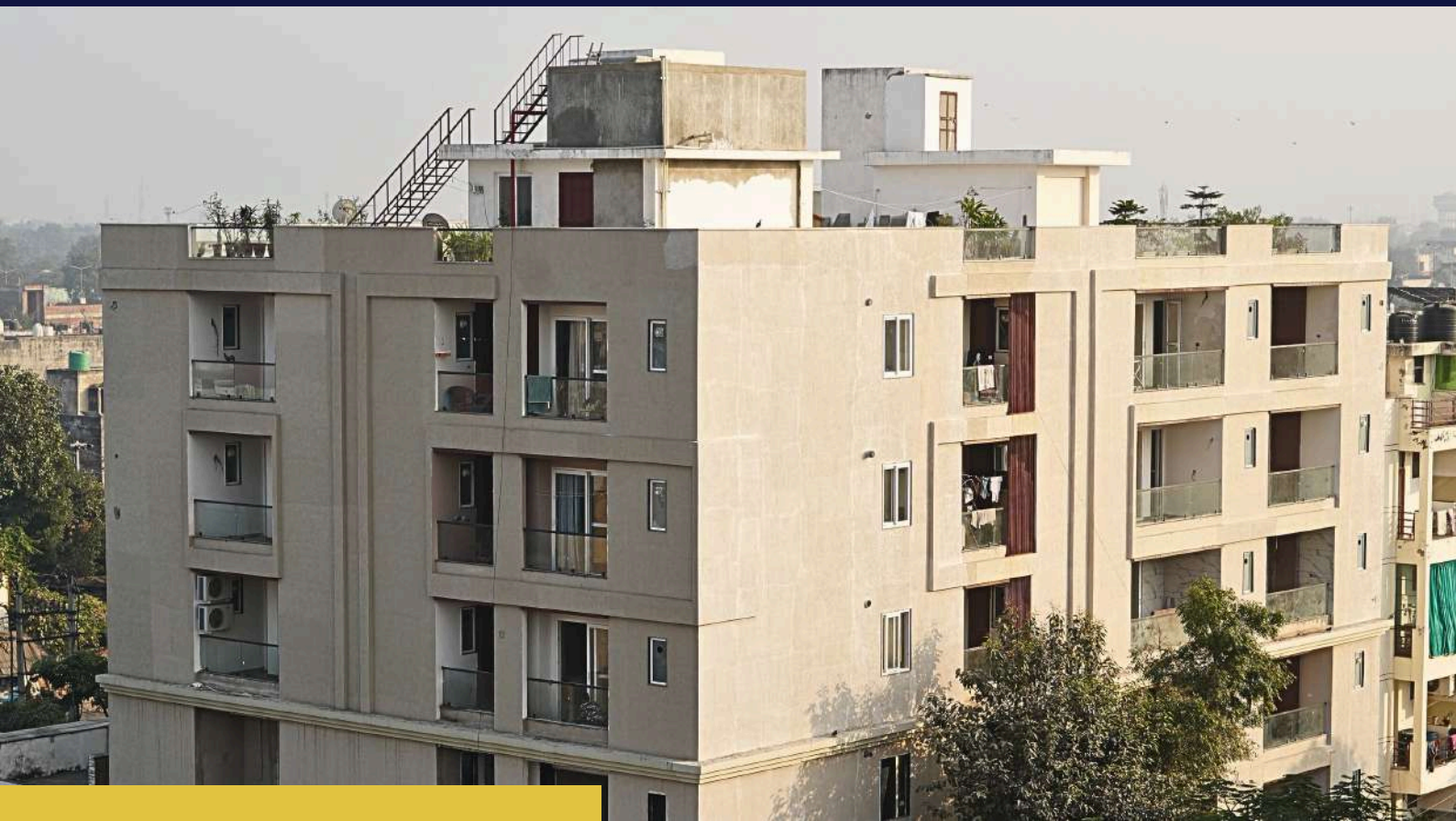
# Project Portfolio

Our portfolio reflects our journey, values, and execution capabilities. In 2.5 years, Altaro Infra has successfully completed diverse large-scale projects, including boutique hotels, premium residences, and industrial infrastructure. Each project highlights our adaptability, innovation, and commitment to design integrity, with careful planning for functionality, visual harmony, and durability. With an unwavering focus on sustainability and client satisfaction, we have cultivated strong relationships with partners and clients alike.

Our team of dedicated professionals works tirelessly to ensure every project not only meets but exceeds expectations, delivering spaces that inspire and endure. We pride ourselves on our ability to transform visions into reality, leveraging cutting-edge technology and industry-leading practices to create environments that are both beautiful and functional. As we look to the future,

we remain committed to pushing the boundaries of design and construction, continuously evolving to meet the needs of an ever-changing world.





# Rosewood Apartments

**Residential Apartments | Alwar**

A contemporary residential development designed for modern urban living. Rosewood Apartments offers well-planned 3 BHK and 4 BHK residences with efficient layouts, functional balconies, and refined architectural expression. Built with a focus on structural strength, clean finishes, and long-term durability.

45,000 sq ft | 20 Units | 3 & 4 BHK





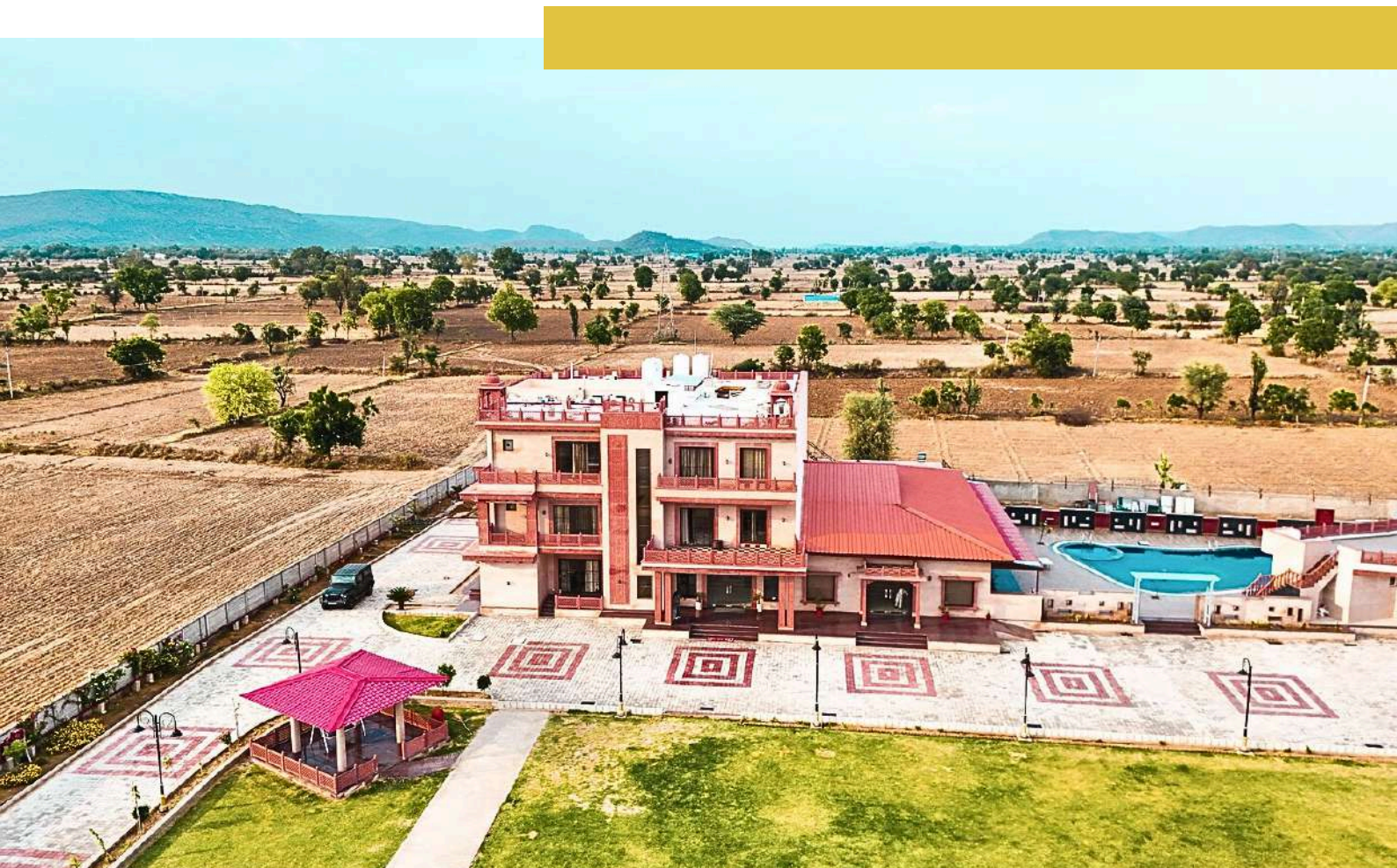


# Infinity Hotels & Resorts

Luxury Boutique Resort | Chikani, Alwar

A boutique hospitality destination set across expansive landscaped grounds. The resort includes 21 guest rooms, a banquet facility, and large open lawns, executed end-to-end with disciplined planning and on-time delivery.

4 Acres | 21 Rooms | Banquet & Landscaped Lawn









# Glassman India

Industrial Manufacturing Facility | MIA, Alwar

A purpose-built industrial facility developed with precision engineering and operational efficiency. Executed with a strong focus on structural integrity, utility planning, and industrial-grade finishes to support seamless manufacturing operations.

50,000 sq ft | Industrial Unit









# Daffodil Apartments

Premium Residential Living | Alwar

An exclusive low-density residential project featuring spacious 4 BHK homes. Daffodil Apartments is designed to deliver privacy, comfort, and efficient space utilisation through minimal design language and disciplined execution.

25,000 sq ft | 10 Units | 4 BHK









# Gurukripa House

Luxury Private Residence | Alwar

A bespoke 7 BHK luxury residence designed for refined living. Featuring expansive interiors, a private pool, and landscaped gardens, the home reflects personalised design, premium detailing, and execution precision.

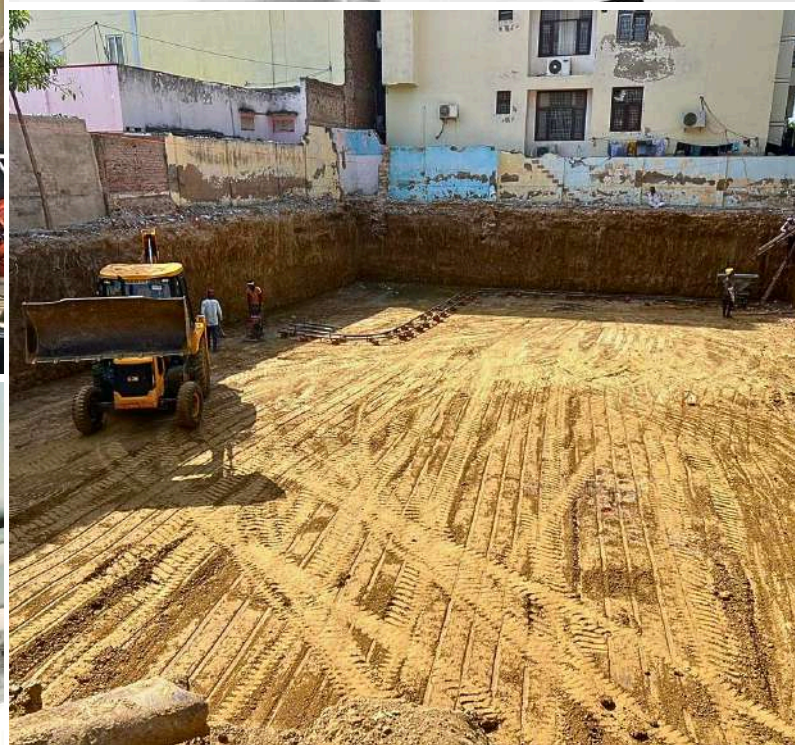
25000 sq ft | 7 BHK | Pool & Garden



















*"Great architecture leaves a lasting impression—not only in how it looks, but in how it lives. At Altaro Infra, we bring clarity to ideas, discipline to execution, and meaning to every square foot we build."*

*Our journey is driven by innovation, craftsmanship, and an unwavering focus on long-term value. With every project, we aim to elevate experiences and redefine what well-built spaces can achieve."*

**Get In Touch For More Information:**

+91 9521248181, +91 8094572829

[altaroinfra@gmail.com](mailto:altaroinfra@gmail.com) | [info@altaroinfra.com](mailto:info@altaroinfra.com) | [sales@altaroinfra.com](mailto:sales@altaroinfra.com)

A788 2nd Floor, TGMC Building, Sahakara Nagar, Bangalore-560092

[www.altaroinfra.com](http://www.altaroinfra.com)